

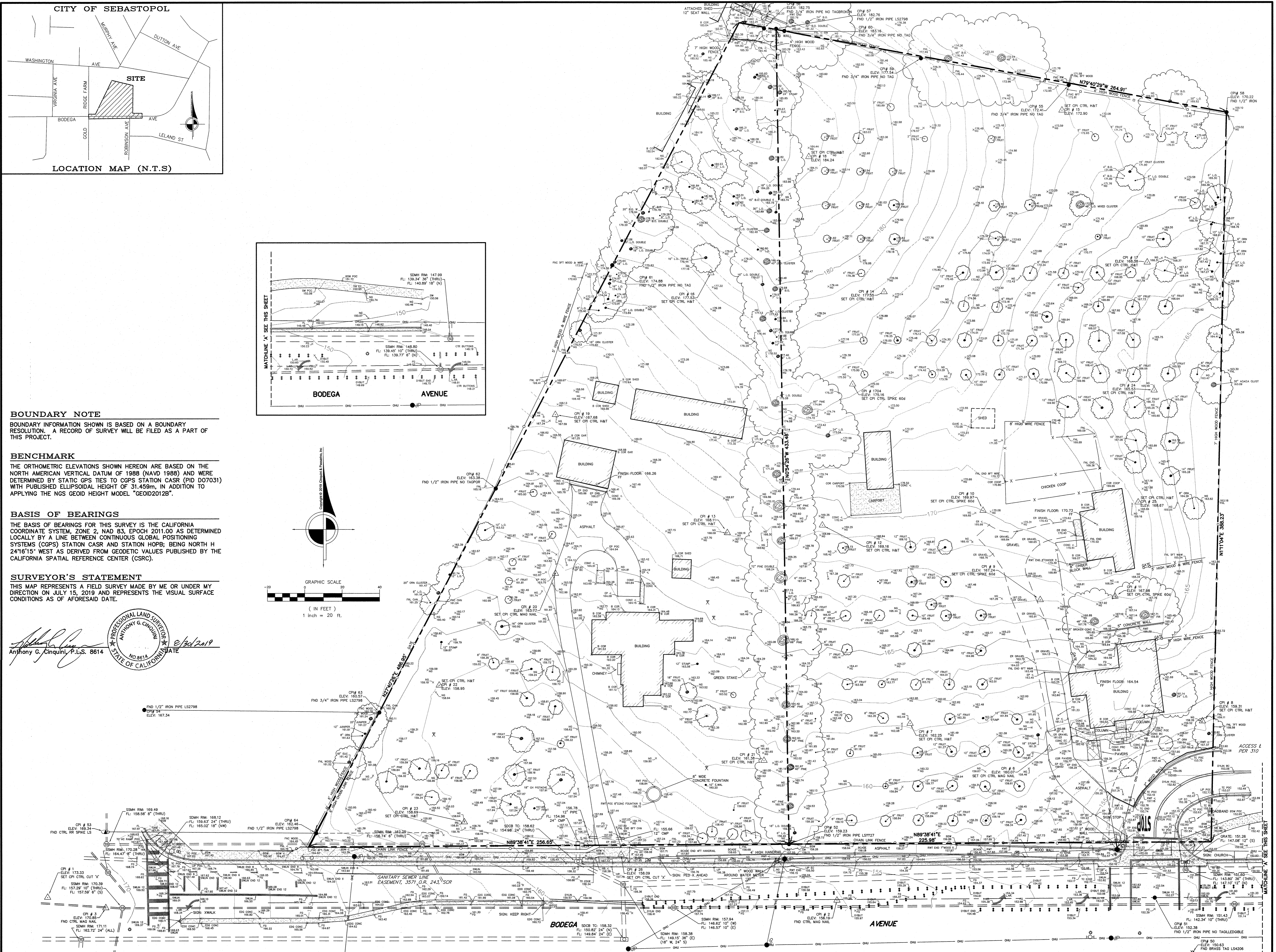
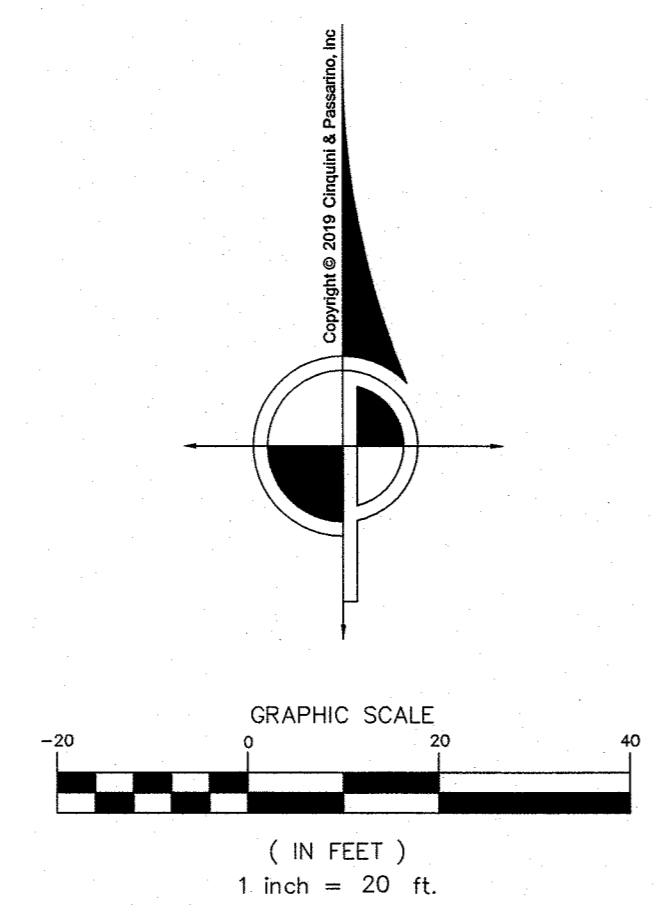
BOUNDARY NOTE
 BOUNDARY INFORMATION SHOWN IS BASED ON A BOUNDARY RESOLUTION. A RECORD OF SURVEY WILL BE FILED AS A PART OF THIS PROJECT.

BENCHMARK
 THE ORTHOMETRIC ELEVATIONS SHOWN HEREON ARE BASED ON THE NORTH AMERICAN VERTICAL DATUM OF 1988 (NAVD 1988) AND WERE DETERMINED BY STATIC GPS TIES TO CGPS STATION CASR (PID D07031) WITH PUBLISHED ELLIPSOIDAL HEIGHT OF 31.4539m. IN ADDITION TO APPLYING THE NGS GEOID HEIGHT MODEL "GEOID2012B".

BASIS OF BEARINGS
 THE BASIS OF BEARINGS FOR THIS SURVEY IS THE CALIFORNIA COORDINATE SYSTEM, ZONE 2, NAD 83, EPOCH 2011.00 AS DETERMINED LOCALLY BY A LINE BETWEEN CONTINUOUS GLOBAL POSITIONING SYSTEMS (CGPS) STATION CASR AND STATION HOPB; BEING NORTH H 241°15' WEST AS DERIVED FROM GEODETIC VALUES PUBLISHED BY THE CALIFORNIA SPATIAL REFERENCE CENTER (CSRC).

SURVEYOR'S STATEMENT
 THIS MAP REPRESENTS A FIELD SURVEY MADE BY ME OR UNDER MY DIRECTION ON JULY 15, 2019 AND REPRESENTS THE VISUAL SURFACE CONDITIONS AS OF AFORESAID DATE.

ANTHONY G. CINQUINI, P.L.S. 8614
 PROFESSIONAL LAND SURVEYOR
 STATE OF CALIFORNIA
 8/30/2019



LEGEND (ALL SYMBOLS MAY NOT APPLY)

--- SUBJECT PROPERTY BOUNDARY	--- WIRE FENCE	⊕ IRRIGATION CONTROL VALVE	⊕ JOINT POLE W/STREET LIGHT	⊕ TELEPHONE VAULT	B.O. BLACK OAK	BLDG BUILDING	FL FLOWLINE	RWB RETAINING WALL BOTTOM
--- OVERHEAD ELECTRIC LINE	--- CONCRETE	⊕ MONITORING WELL	⊕ TRAFFIC SIGNAL	⊕ GAS VALVE	EUC EUCALYPTUS	BSW BACK OF SIDEWALK	FG FINISH GRADE	RWB RETAINING WALL TOP
--- OVERHEAD TELEPHONE LINE	--- PERIMETER OF BUILDING	⊕ WELL	⊕ TRAFFIC SIGNAL POLE W/STREET LIGHT	⊕ GAS METER	L.A. LIQUID AMBER	CMP CORRUGATED METAL PIPE	FB GRADE BREAK	SD STORM DRAIN
--- OVERHEAD UTILITY LINES (MULTIPLE)	--- SURVEY CONTROL POINT	⊕ FIRE HYDRANT	⊕ BOLLARD	⊕ SIGN	L.O. LIVE OAK	DI DRAINAGE INLET	HC HANDICAPPED PARKING SPACE	SLB STREET LIGHT BOX
--- OVERHEAD ELECTRIC (HIGH VOLTAGE)	--- SPOT ELEVATION	⊕ SANITARY SEWER CLEANOUT	⊕ STREET LIGHT	⊕ MAILBOX	MAD MADRONE	DN DOCUMENT NUMBER	HDPE HIGH DENSITY POLYETHYLENE	SWBUT SINGLE WHITE BUTTON
--- OVERHEAD UTILITY LINES (HIGH VOLTAGE)	--- SANITARY SEWER MANHOLE	⊕ LANDSCAPE LIGHT	⊕ LANDSCAPE LIGHT	⊕ FOUND IRON PIPE, SIZE AND TAGGED AS NOTED	ORN ORNAMENTAL	DN DRIVENWAY	ITM TITLE REPORT ITEM NUMBER	SYBUT SINGLE YELLOW BUTTON
--- GAS LINE	--- STORM DRAIN MANHOLE	⊕ STREET LIGHT BOX	⊕ STREET LIGHT BOX	⊕ FOUND MONUMENT, SIZED AND STAMPED, AS NOTED	REDWOOD	DN DOUBLE YELLOW BUTTON	JB JUNCTION BOX	TB TOP OF BANK
--- STORM DRAIN LINE	--- SANITARY SEWER LINE	⊕ WHITE OAK	⊕ TRAFFIC SIGNAL LIGHT BOX	⊕ TREE SYMBOL AND DRIP LINE	W.O. WHITE OAK	EP EDGE PAVING	LP LIP OF GUTTER	TC TOP OF CURB
--- WATER LINE	--- STORM DRAIN CATCH BASIN	⊕ SYCAMORE	⊕ TRAFFIC DETECTOR LID	⊕ CABLE TV BOX	W.C. WILLOW	ETW EDGE OF TRAVELED WAY	NG NATURAL GROUND	TRC BACK OF ROLLED CURB
--- UNDERGROUND TRAFFIC SIGNAL WIRE	--- DRAINAGE INLET	⊕ YC YCLOW	⊕ TELEPHONE BOX	⊕ TELEPHONE MANHOLE	ASP ASPHALT	ETW EDGE TRAVELED WAY	OR OFFICIAL RECORD	TSC TRAFFIC SIGNAL BOX
--- CHAINLINK FENCE	--- DRAINAGE INLET	⊕ ASPHALT	⊕ POWER POLE	⊕ JOINT UTILITY POLE	B.F.P.C.V. BACK FLOW PREVENTION CHECK VALVE	EXIST EXISTING	PL PROPERTY LINE	TW TOP OF WALL
--- WOOD FENCE	--- DRAINAGE DOWNSPOUT	⊕ REINFORCED CONCRETE PIPE	⊕ JOINT UTILITY POLE				OP OVERHEAD	

Job Name: WOODMARK APARTMENTS
 7760 & 7716 BODEGA AVENUE
 SEBASTOPOL, CA

Drawn By: JM
 Checked By: AGC

Scale: 1" = 20'

Sheet 1 of 1
 Job Number: 8616-19

Topographic Map

CINQUINI & PASSARINO, INC.
 LAND SURVEYING & CONSTRUCTION
 1360 N. Dutton Ave. #150
 Santa Rosa, Ca. 95401
 Phone: (707) 542-6268
 Fax: (707) 542-2106
 www.cinquinipassarino.com